

ATTACHMENT VI-1

LANDFILL DRAWINGS AND SPECIFICATIONS

ATTACHMENT VI-1

LANDFILL DRAWINGS

Cell 4 Plan View Sections

Cell 5 Plan View Sections

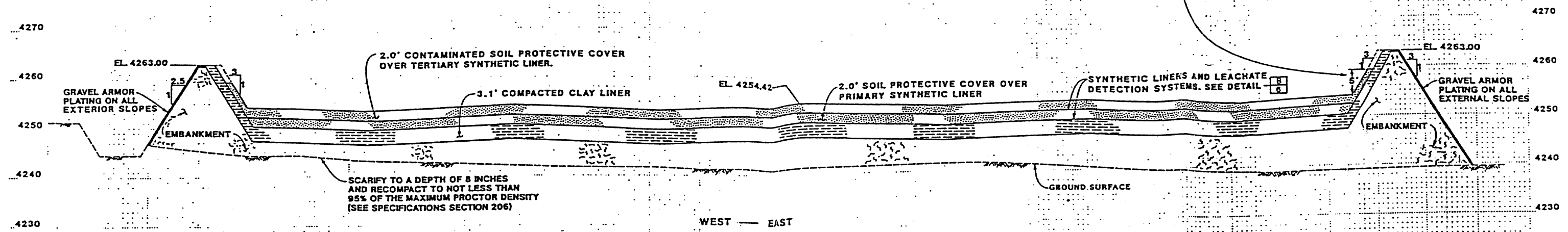
Note that waste and cap elevations shown in shadow lines on the drawing are only illustrative of the shape of the waste mound and cap at closure.

Cell B/6 Plan View Sections

Note that waste and cap elevations shown in shadow lines on the drawing are only illustrative of the shape of the waste mound and cap at closure.

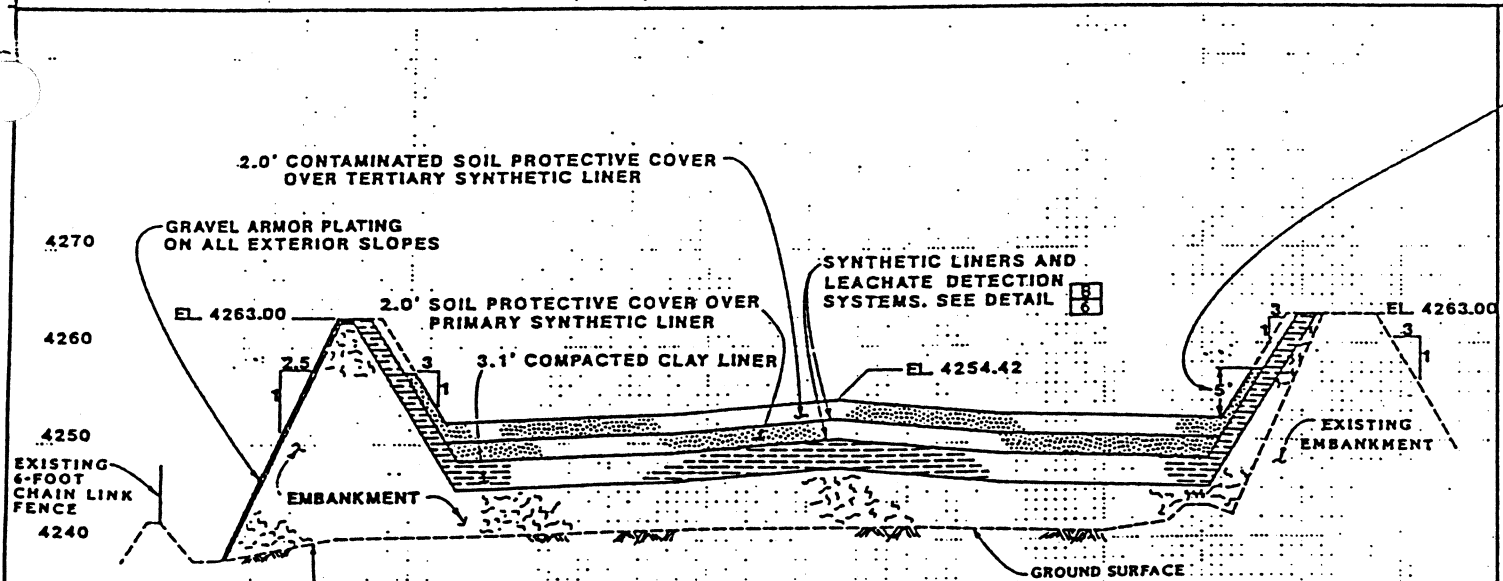
Cell 7 Plan View Sections

Note that waste and cap elevations shown in shadow lines on the drawing are only illustrative of the shape of the waste mound and cap at closure.



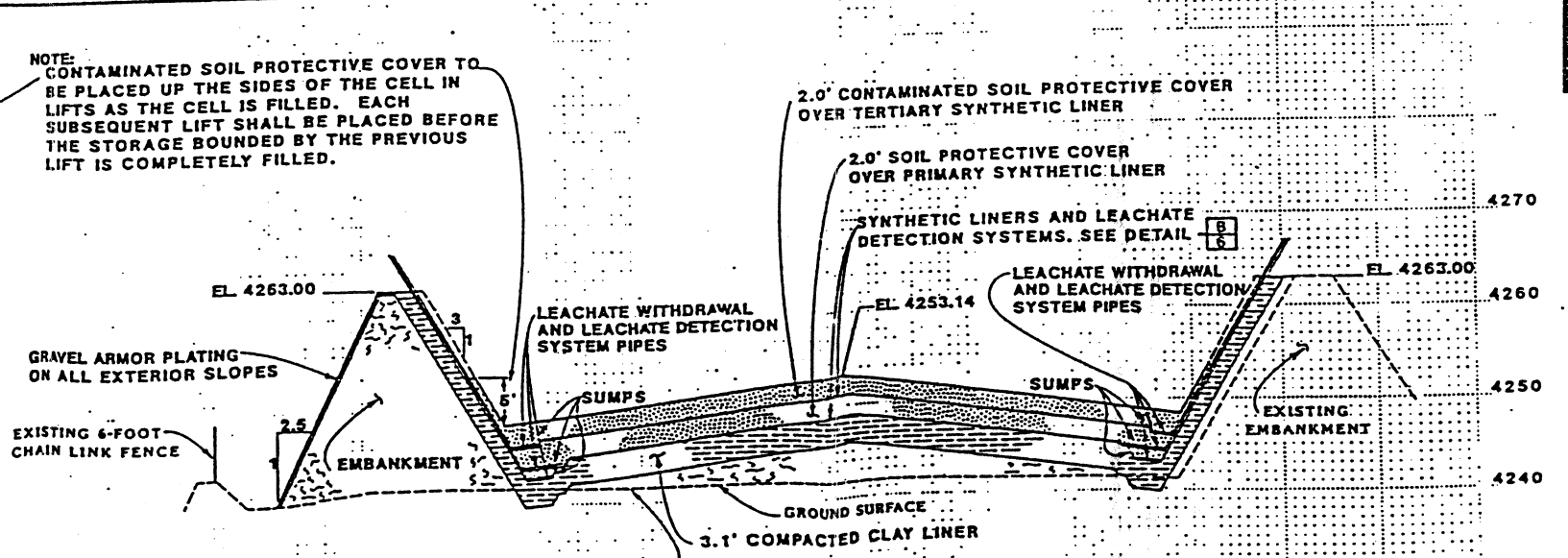
NOTE: CONTAMINATED SOIL PROTECTIVE COVER TO BE PLACED UP THE SIDES OF THE CELL IN LIFTS AS THE CELL IS FILLED. EACH SUBSEQUENT LIFT SHALL BE PLACED BEFORE THE STORAGE BOUNDED BY THE PREVIOUS LIFT IS COMPLETELY FILLED.

SECTION 3
860 N 4



NOTE: CONTAMINATED SOIL PROTECTIVE COVER TO BE PLACED UP THE SIDES OF THE CELL IN LIFTS AS THE CELL IS FILLED. EACH SUBSEQUENT LIFT SHALL BE PLACED BEFORE THE STORAGE BOUNDED BY THE PREVIOUS LIFT IS COMPLETELY FILLED.

SOUTH — NORTH
SECTION 4
2698 W 4

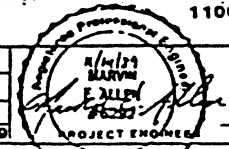


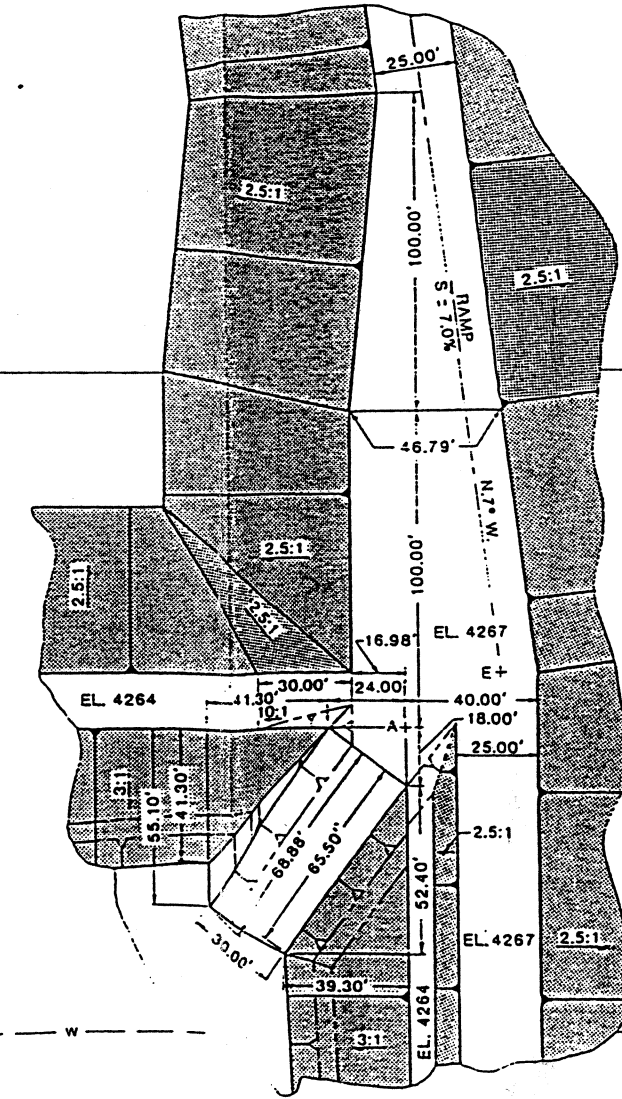
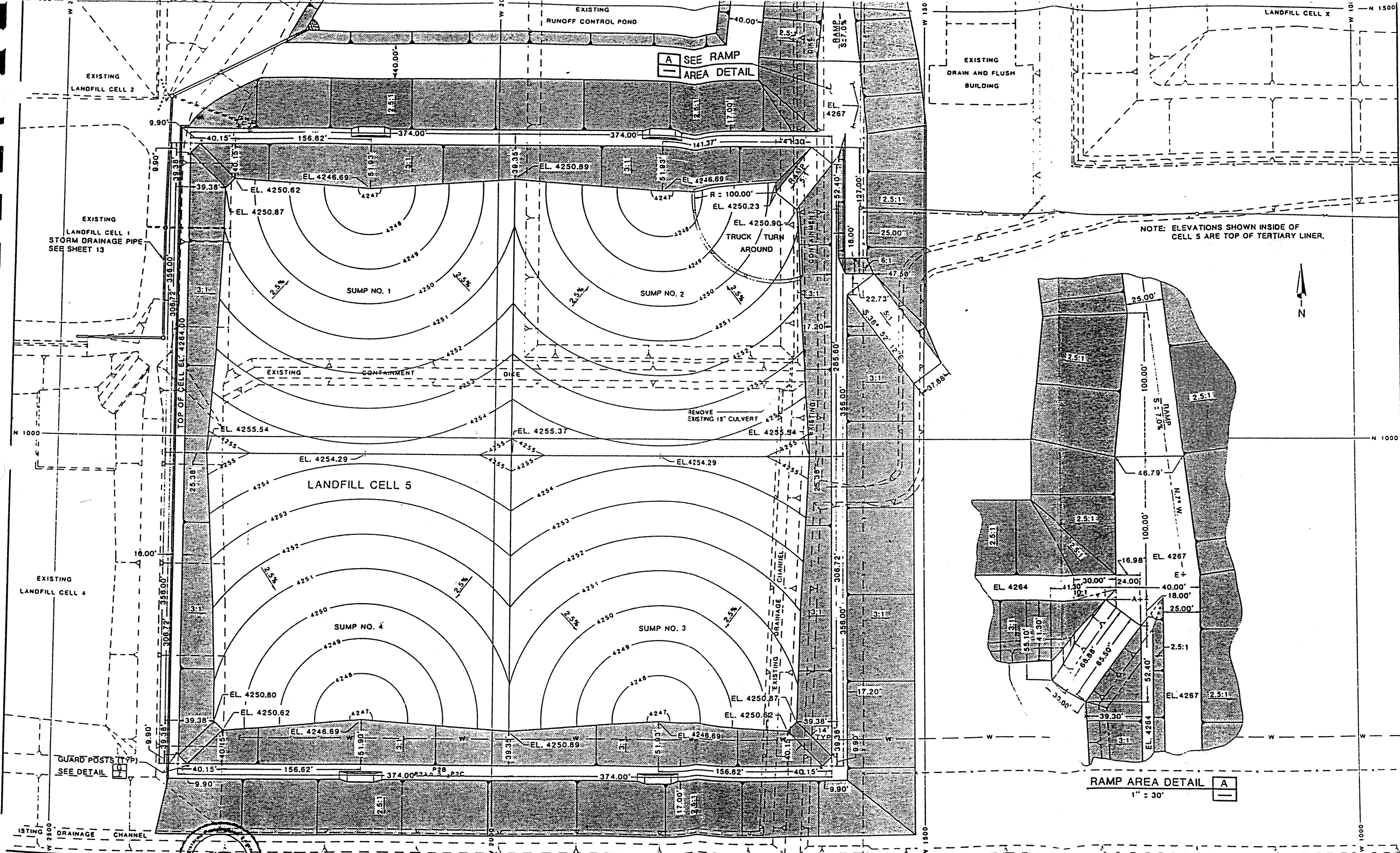
SCARIFY TO A DEPTH OF 8 INCHES AND RECOMPACT TO NOT LESS THAN 95% OF THE MAXIMUM PROCTOR DENSITY (SEE SPECIFICATIONS SECTION 206)

SOUTH — NORTH
SECTION 5
3139 W 4

APPROXIMATE HALF-SCALE REDUCTION

3		DESIGNED MPW	
2		DRAFTED JVH	
1		CHECKED MEA	
NO DATE	REVISIONS	BY	DATE





RAMP AREA DETAIL A
1" = 30'

H&L ENGINEERING
CONSULTANTS ENGINEERS
SALT LAKE CITY, UTAH

Z. ALLEN
#6297

DESIGNED	MPW	3	
DRAFTED	DRB	2	
CHECKED	MEA	1	
DATE	APRIL, 1990	NO.	DATE

REVISIONS

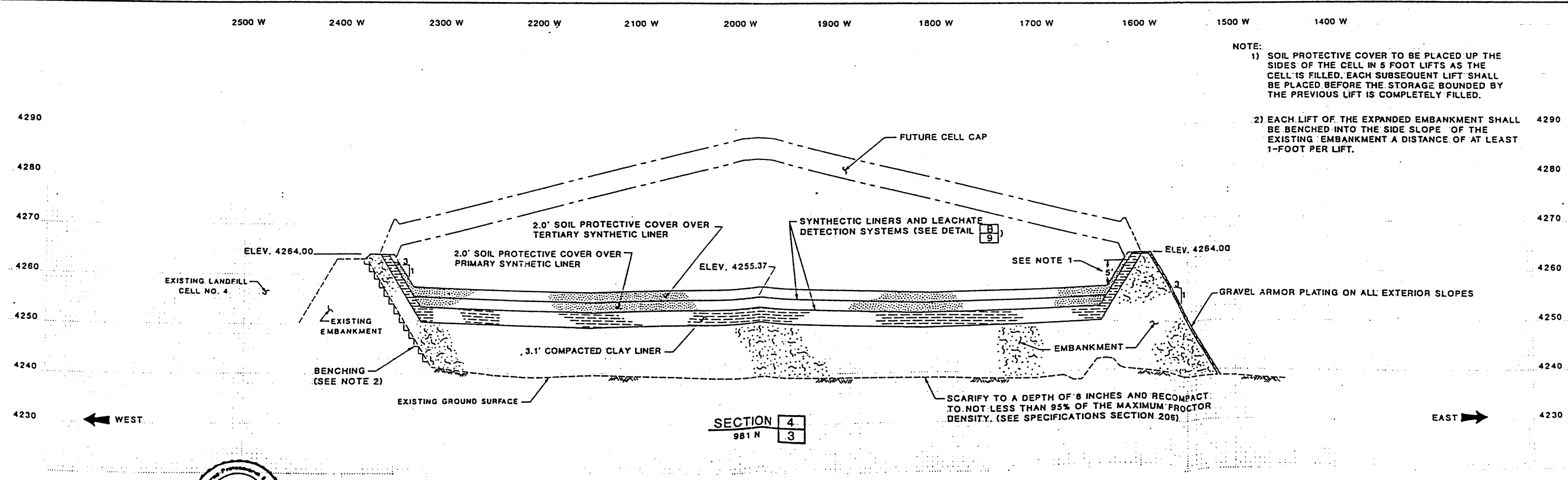
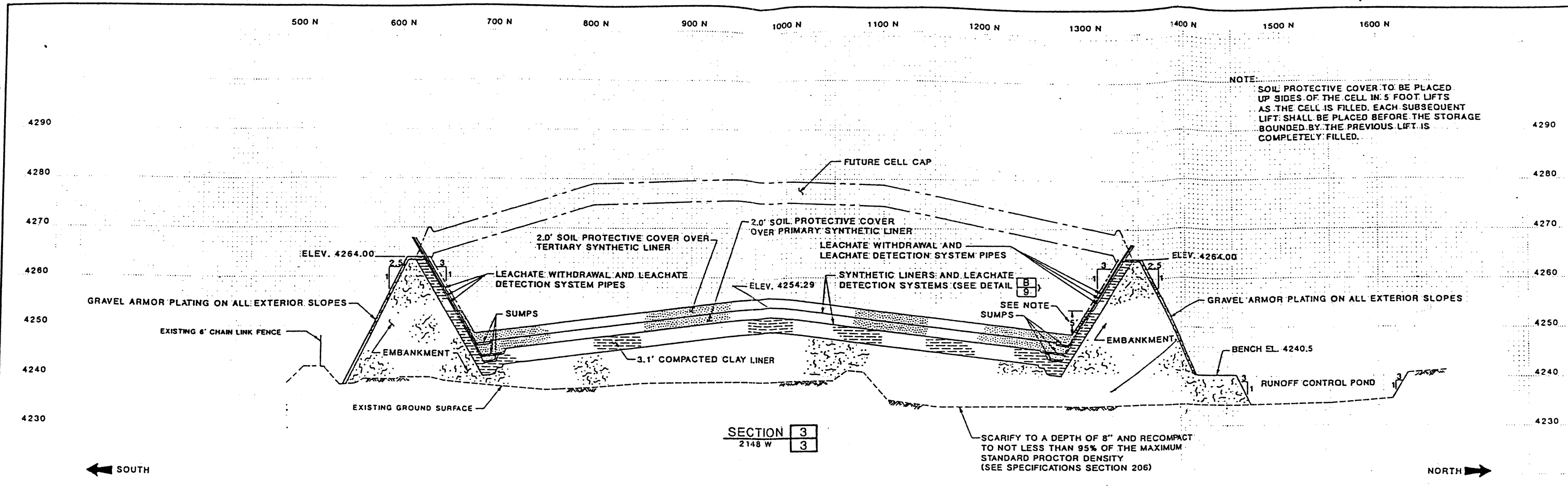
SCALE
1" = 50'

VERIFY SCALE
0" = 1" IS ONE INCH ON ORIGINAL DRAWING IF NOT ONE INCH ON THIS SHEET ADJUST SCALE ACCORDINGLY

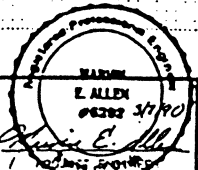


GRASSY MOUNTAIN FACILITY
LANDFILL CELL 5
PLAN VIEW

SHEET NO. 4
OF 16
64-23-100
64.23.100.00



HA&L ENGINEERING
CONSULTANTS ENGINEERS
Salt Lake City, Utah



DESIGNED	MPW	3			
DRAFTED	JVH	2			
CHECKED	MEA	1			
DATE	APRIL, 1990	NO.	1	DATE	
REVISIONS			NO.	DATE	
			BY	JAPVC	

SCALE
1" = 10' V
1" = 50' H

VERIFY SCALE
0" = 1" V
1" = 10' H
IF NOT ONE INCH ON ORIGINAL DRAWING, ADJUST SCALES ACCORDINGLY.



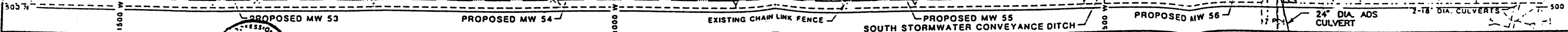
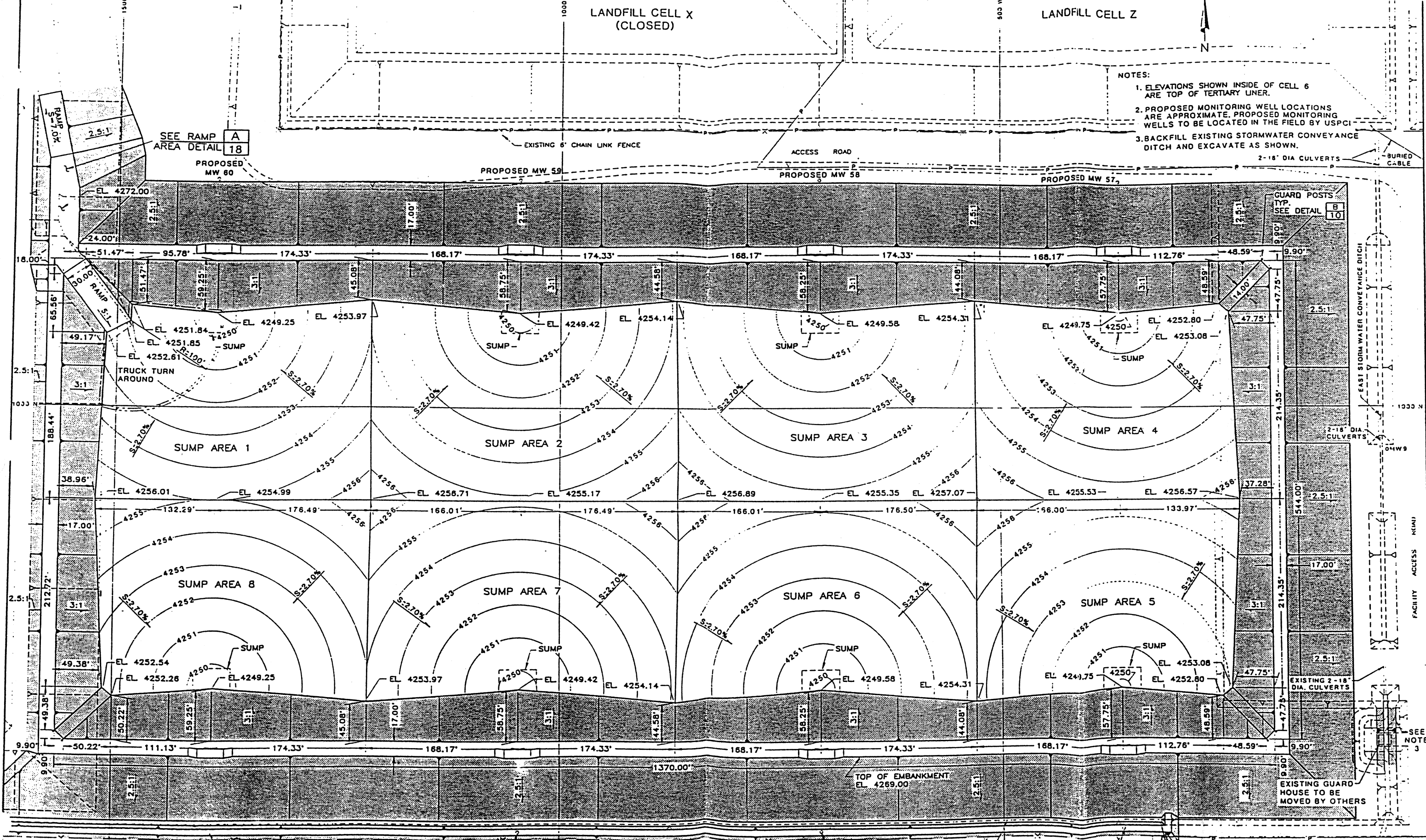
GRASSY MOUNTAIN FACILITY
LANDFILL CELL NO. 5
SECTIONS

SHEET NO. 5
OF 16
64-23-100

LANDFILL CELL X
(CLOSED)

LANDFILL CELL Z

- NOTES:
- ELEVATIONS SHOWN INSIDE OF CELL 6 ARE TOP OF TERTIARY LINER.
 - PROPOSED MONITORING WELL LOCATIONS ARE APPROXIMATE. PROPOSED MONITORING WELLS TO BE LOCATED IN THE FIELD BY USPCI.
 - BACKFILL EXISTING STORMWATER CONVEYANCE DITCH AND EXCAVATE AS SHOWN.



HA&L ENGINEERING
CONSULTANTS ENGINEERS
Salt Lake City Utah

DESIGNED MPW 3
DRAFTED DRB 2
CHECKED MEA 1
DATE DEC. 1991 NO. DATE

DESIGNED MPW	3
DRAFTED DRB	2
CHECKED MEA	1
DATE	DEC. 1991
NO.	DATE

REVISIONS	BY	APPROVED

SCALE
1" = 50'

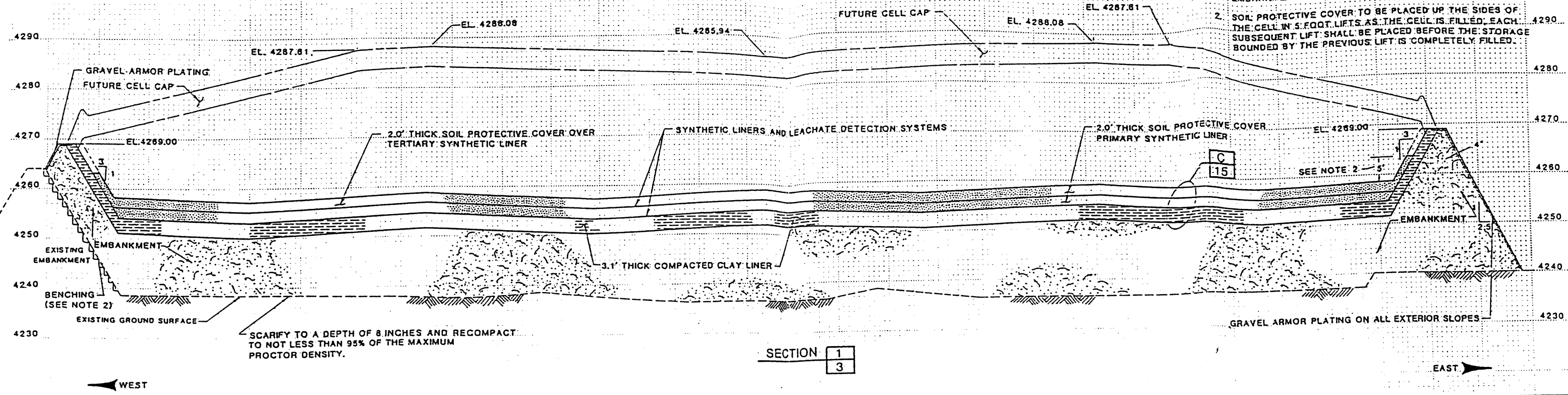
VERIFY SCALE
OF DRAWING 1"
BAR IS ONE INCH ON
ORIGINAL DRAWING
IF NOT ONE INCH ON
THIS SHEET, ADJUST
SCALE APPROPRIATE

USPCI
A Subsidiary
Union Pacific Corporation

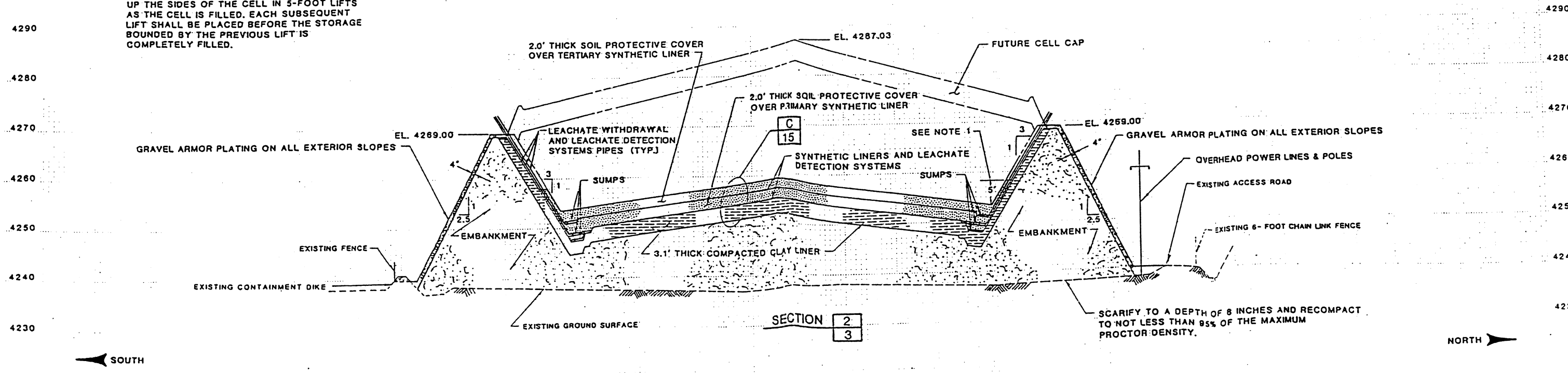
GRASSY MOUNTAIN FACILITY
LANDFILL CELL 6
PLAN VIEW

SHEET NO.
4
OF 19
64-26-100

- NOTES:
1. EACH LIFT OF THE EXPANDED EMBANKMENT SHALL BE BENCHED INTO THE SIDE SLOPE OF THE EXISTING EMBANKMENT A DISTANCE OF AT LEAST 1- FOOT PER LIFT.
 2. SOIL PROTECTIVE COVER TO BE PLACED UP THE SIDES OF THE CELL IN 5-FOOT LIFTS AS THE CELL IS FILLED. EACH SUBSEQUENT LIFT SHALL BE PLACED BEFORE THE STORAGE BOUNDED BY THE PREVIOUS LIFT IS COMPLETELY FILLED.



- NOTE:
1. SOIL PROTECTIVE COVER TO BE PLACED UP THE SIDES OF THE CELL IN 5-FOOT LIFTS AS THE CELL IS FILLED. EACH SUBSEQUENT LIFT SHALL BE PLACED BEFORE THE STORAGE BOUNDED BY THE PREVIOUS LIFT IS COMPLETELY FILLED.



HA&L ENGINEERING
CONSULTANTS ENGINEERS
Salt Lake City, Utah

REGISTERED PROFESSIONAL ENGINEER
No. 6292
Murray E. Allen

DESIGNED MPW	3		
DRAFTED B.M.	2		
CHECKED MEA	1		
DATE DEC. 1991	NO.	DATE	REVISIONS

SCALE
1" = 10' V
1" = 50' H

VERIFY SCALE
0" = 1" H
BAR IS ONE INCH ON ORIGINAL DRAWING. IF NOT ONE INCH ON THIS SHEET, ADJUST SCALE ACCORDINGLY.



GRASSY MOUNTAIN FACILITY
LANDFILL CELL 6
SECTIONS

SHEET NO. 5
OF 19
84-26-100
64.25.100.005

PLOT III - DWG UNIT: 1-50
 PLOT AREA:
 PLOT OPTIONS
 PLOT III - DWG UNIT: 1-50
 PLOT AREA:
 PLOT OPTIONS
 PLOT III - DWG UNIT: 1-50
 PLOT AREA:
 PLOT OPTIONS

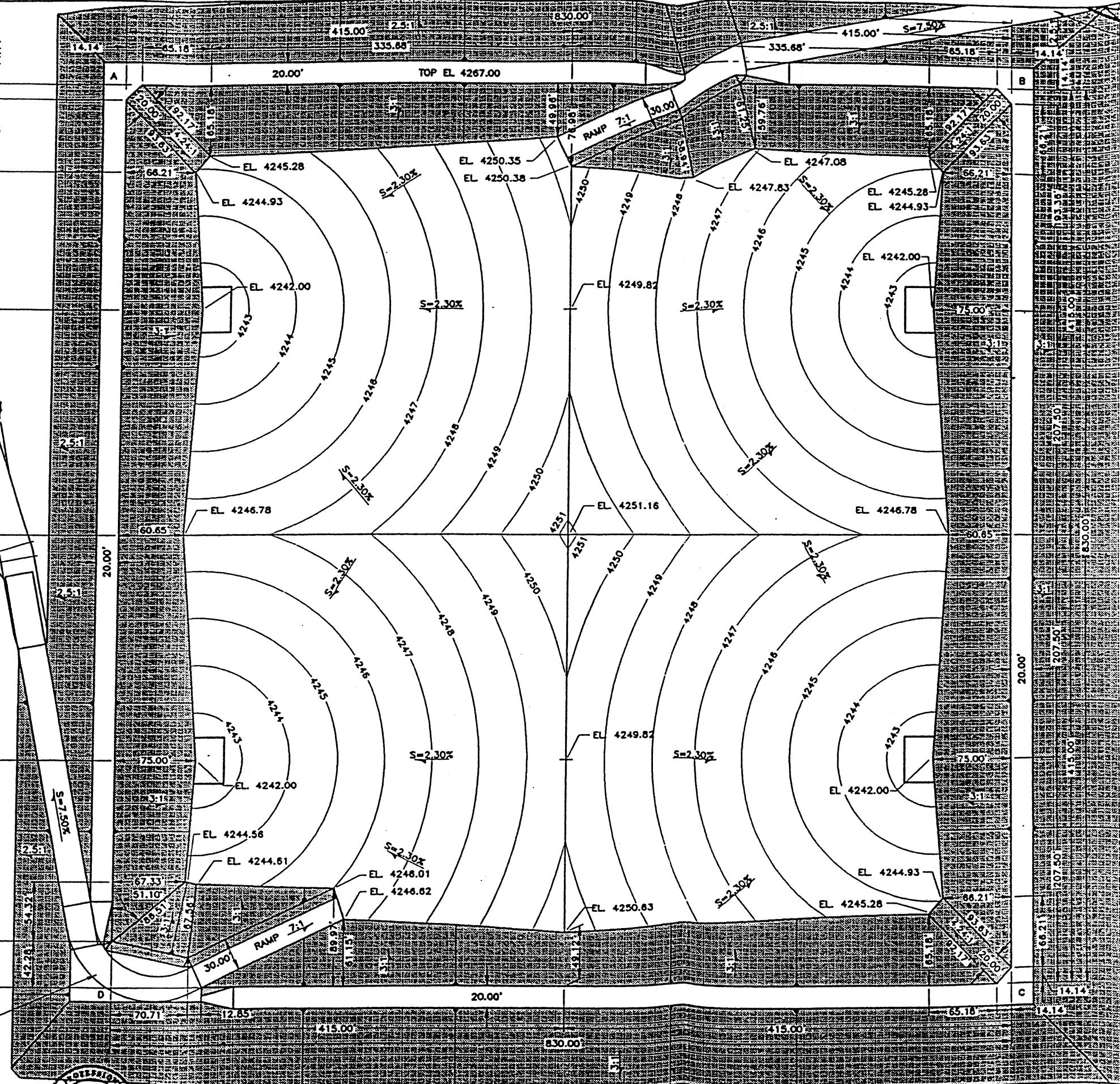
SEE SHEET 7 FOR DIMENSIONS FOR NORTHEAST RAMP

COORDINATE TABLE			
POINT NO.	NORTHING	EASTING	ELEV.
A	N. 390.00	W. 3680.00	4267.00
B	N. 390.00	W. 2850.00	4267.00
C	S. 440.00	W. 2850.00	4267.00
D	S. 440.00	W. 3680.00	4267.00



NOTE:
ELEVATIONS SHOWN INSIDE OF CELL ARE TOP OF TERTIARY LINER.

SEE SHEET 8 FOR DIMENSIONS OF SOUTHWEST RAMP



HA&L ENGINEERING
CONSULTANTS ENGINEERS
Salt Lake City, Utah

DESIGNED MPW 3
DRAFTED MPW 2
CHECKED MEA 1
DATE DEC. 1995 NO. DATE

REVISIONS
BY
DATE

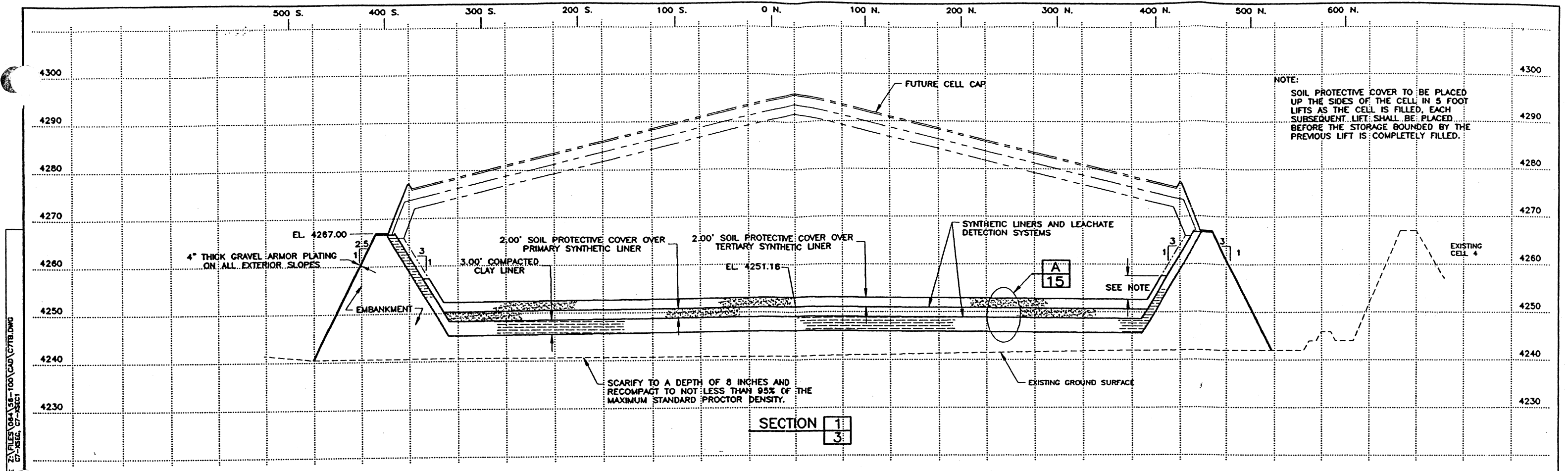
SCALE
1"=50'

VERIFY SCALE
1"=50'
BAR IS ONE INCH ON
ORCHARD, DRAWING
1"=50' SHEET, READ ON
SCALES ACCORDINGLY.

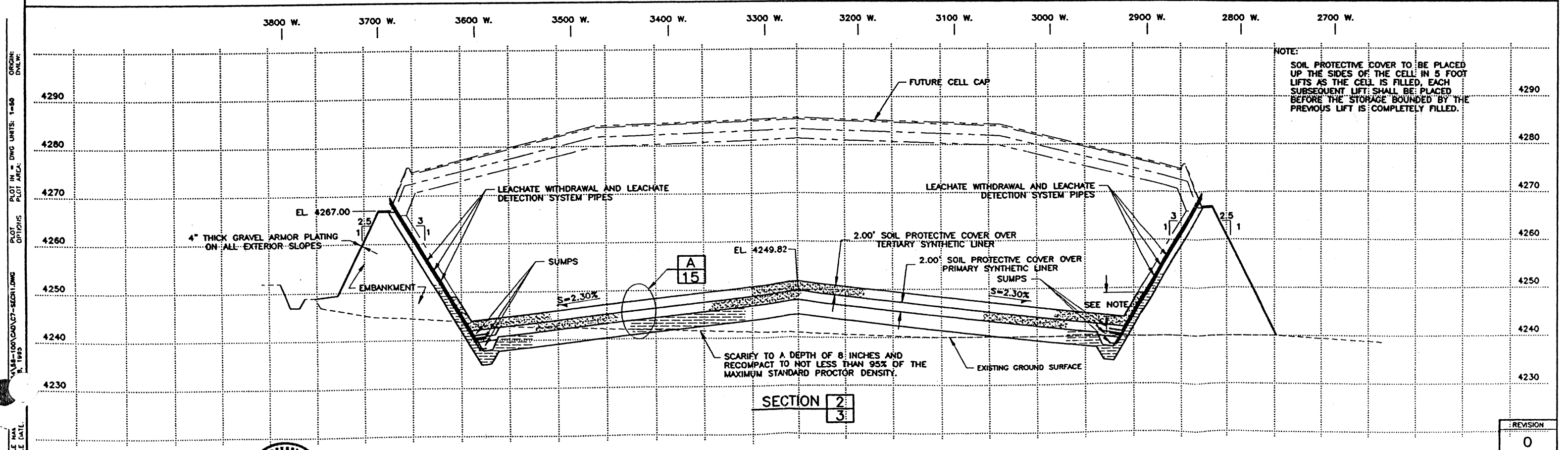
USPCI
A **BOGARD** COMPANY

GRASSY MOUNTAIN FACILITY
LANDFILL CELL 7
PLAN VIEW

REVISION
0
SHEET NO. 6
OF 20
84-56-100



SECTION 1
3



SECTION 2
3

FILE NAME: \\P100\CAD\7-SECT1.DWG
 PLOT IN = DWG UNITS: 1=50
 PLOT AREA:
 DATE: 11/19/95
 ORIGIN: DMLR

H&L
ENGINEERS

CONSULTANTS
ENGINEERS

 MARVIN R. ALLEN

DESIGNED	MPW	3
DRAFTED	RGA	2
CHECKED	MEA	1

SCALE
HORIZONTAL
1" = 50'
VERTICAL
1" = 10'

VERIFY SCALE
0" = 1" ON SHEET
1" = 50' ON SHEET
1" = 10' ON SHEET

USPCI
A **BAIRD** COMPANY

GRASSY MOUNTAIN FACILITY
LANDFILL CELL 7
TYPICAL SECTIONS

REVISION	0
SHEET NO.	9
OF	20
64-56-100	